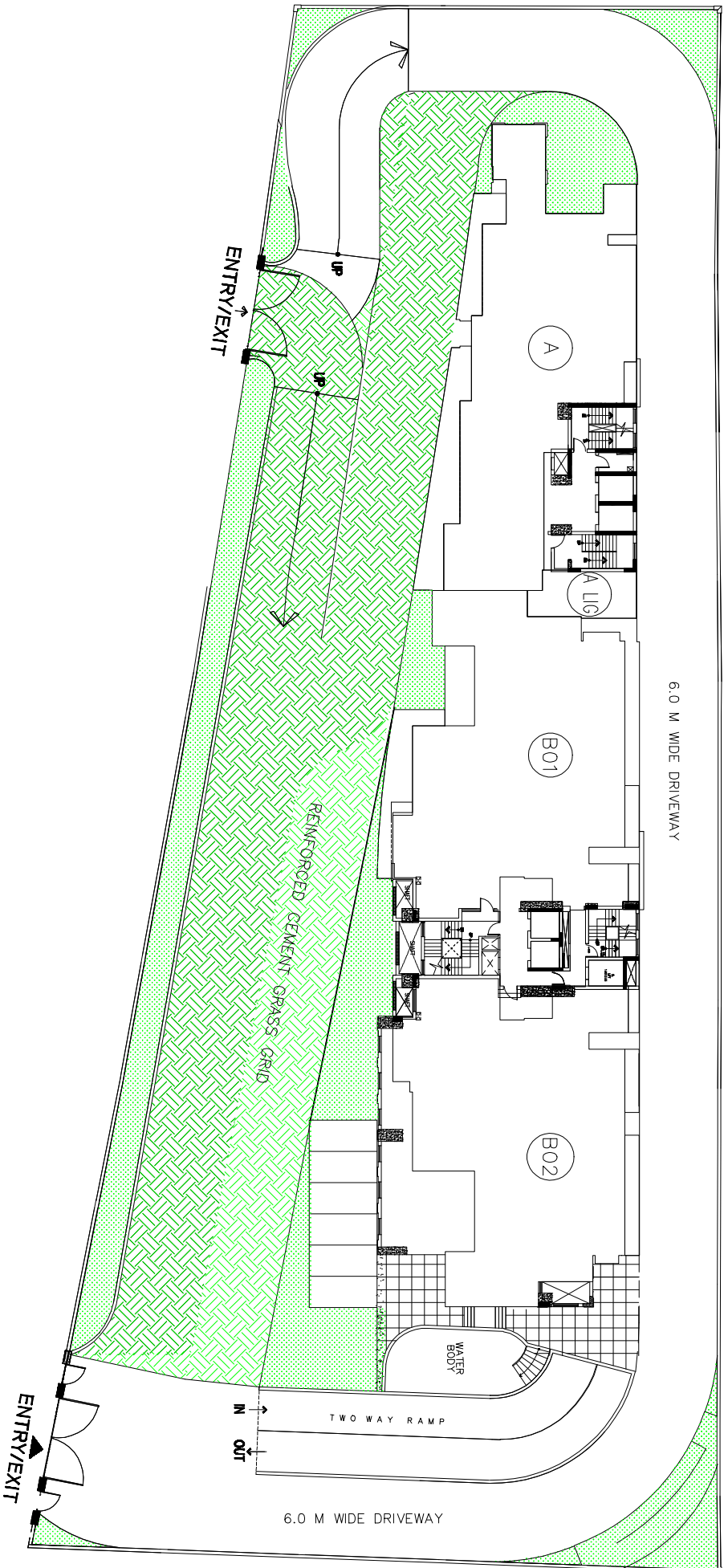
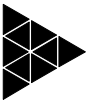


x

 <p><b>DLF G.K. RESIDENCY</b></p>	<p>Project</p> <p><b>Apartments in Queen's Court Greater Kailash II</b></p>	<p><b>LOCATION PLAN</b></p>	
--	---	-----------------------------	---



NOTE: PLAN NOT TO SCALE



**DLF Limited**

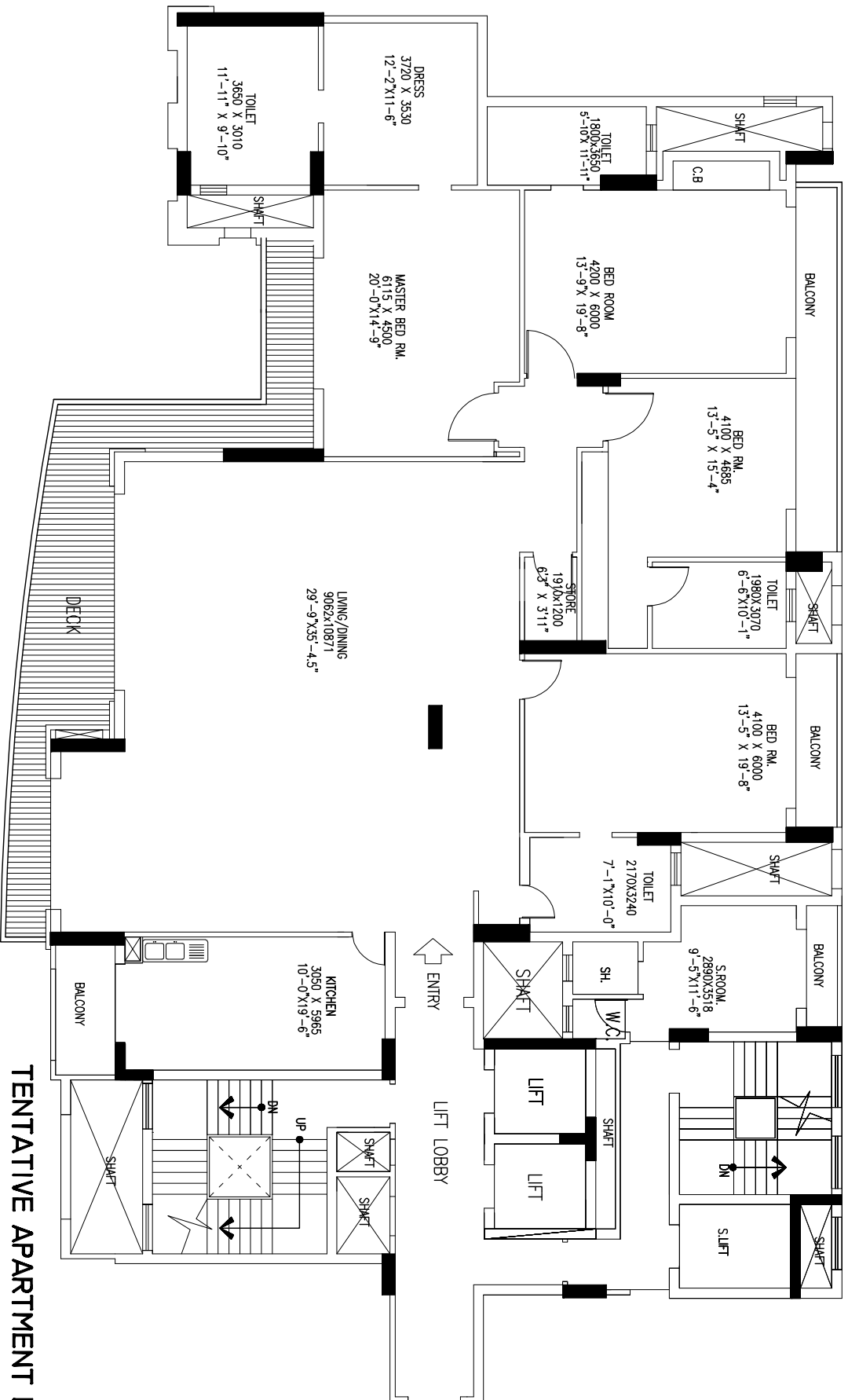
Project

**Apartments in Queen's Court  
Greater Kailash II**

**SITE PLAN**







NOTE: PLAN NOT TO SCALE

TENTATIVE APARTMENT PLAN  
 APARTMENT TYPE B01  
 (FIRST TO 6TH FLOOR)

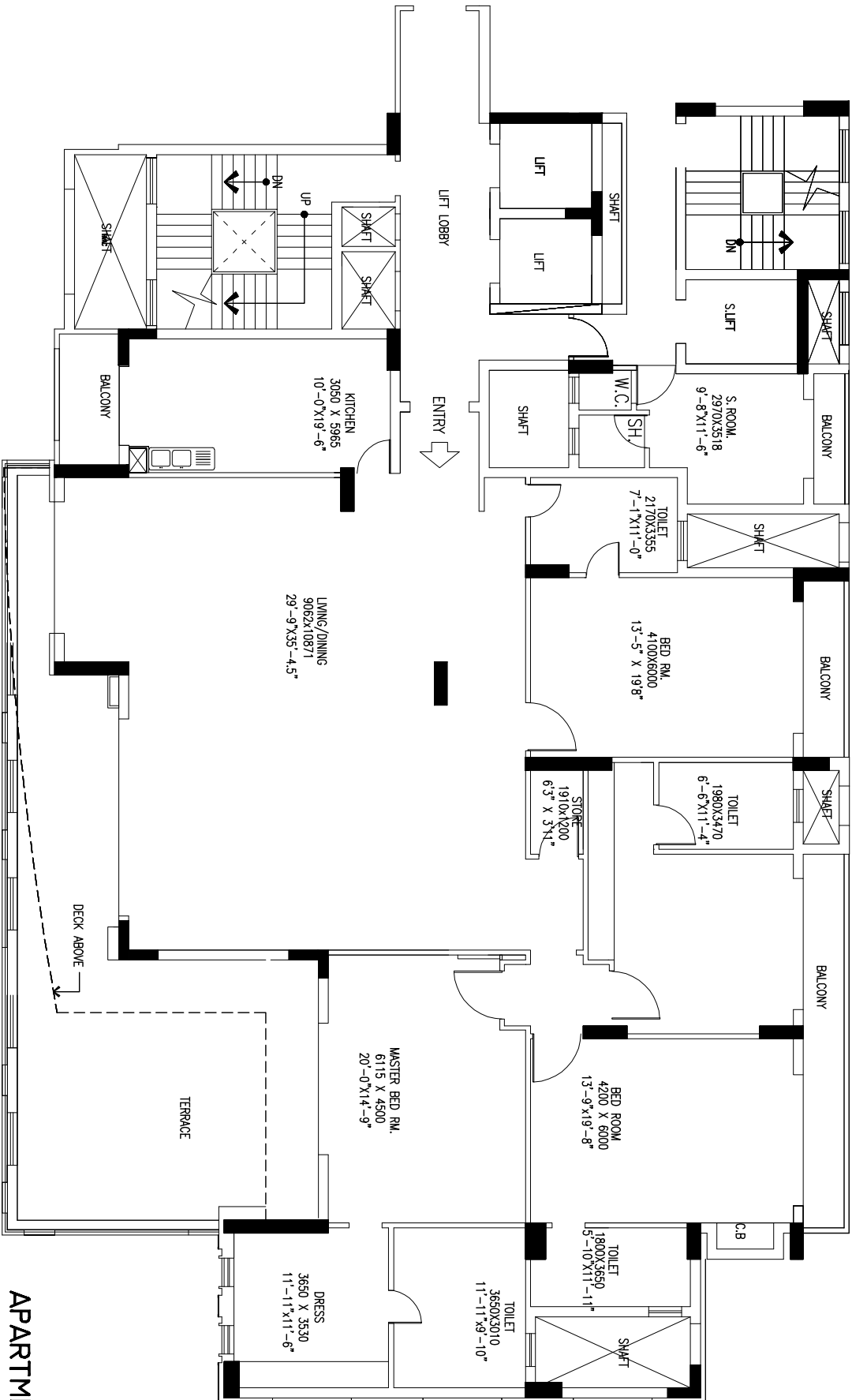


Project  
**Apartments in Queen's Court  
 Greater Kailash II**

Saleable Area

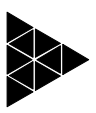
54.92 SFT





NOTE: PLAN NOT TO SCALE

APARTMENT TYPE B02  
 TENTATIVE APARTMENT PLAN  
 (FIRST FLOOR)



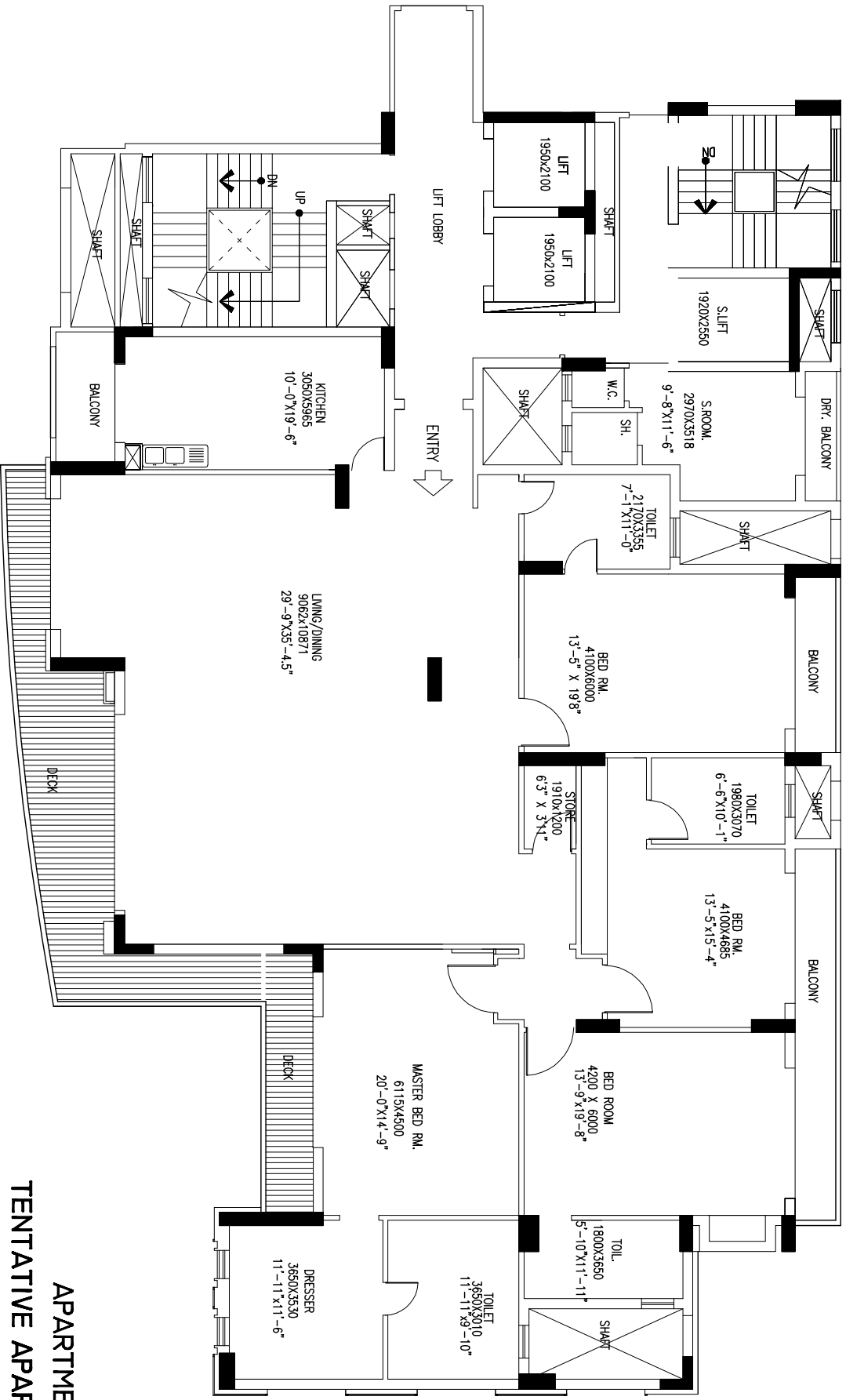
**DLF Limited**

**Project**  
**Apartments in Queen's Court**  
**Greater Kailash II**

**Saleable Area**

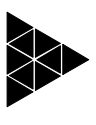
**5875 SFT**





NOTE: PLAN NOT TO SCALE

APARTMENT TYPE B02  
 TENTATIVE APARTMENT PLAN  
 (2ND;3RD;4 TH;6TH FLOOR)



**DLF Limited**

**Project**  
**Apartments in Queen's Court**  
**Greater Kailash II**

**Saleable Area**

**5513 SFT**



# SPECIFICATIONS

## SPECIFICATIONS/ FINISHES

Structure designed for the higher seismic considerations for Zone-V, against Zone-IV as stipulated by the code , for better safety.

Air conditioned Apartments with Energy Efficient VRV System/ Split Ac's.

Environment friendly with Rain Water Harvesting system, and use of treated water from Central STP for flushing.

Air conditioned Lift Lobbies and Entrance Halls.

### LIVING/DINING

a	Floor	Imported marble.
b	Walls	Acrylic emulsion paint on POP punning.
c	Ceiling	Ceiling with acrylic emulsion paint on POP punning.
d	Doors	Solid wood door frames. Panelled shutters made of solid core, teak veneered with PU coating.

### BED ROOMS

a	Floor	Imported marble/Wooden flooring.
b	Walls	Acrylic emulsion paint on POP punning.
c	Ceiling	Ceiling with acrylic emulsion paint on POP punning.
d	Doors	Solid wood door frames. Panelled shutters made of solid core, teak veneered with PU coating.
e	Modular Wardrobes	Imported wardrobe in wood veneer PU coated/high gloss laquer finish.

### KITCHEN

a	Walls	Combination of tiles and acrylic emulsion.
b	Floor	Ceramic tile/imported marble.
c	Counter	Corian/marble/granite.
d	Fittings/ Fixtures	CP fittings & Double bowl SS Sink, Exhaust fan.
e	Kitchen Appliances	Modular Kitchen with Hob, Chimney, Oven, Microwave, Dishwasher, Refrigerator, Washing Machine & geyser.
f	Cooking Gas	Piped and individually metered natural gas (PNG) for hob.

### BALCONY

a	Floor	Imported marble.
---	-------	------------------

### TOILETS

a	Walls	Combination of imported marble, acrylic emulsion and mirror.
b	Floors	Imported marble.
c	Counters	Imported marble/granite for counter top.
d	Fixtures / Accessories	Exhaust fan, Geyser, Under Counter Cabinets, and Glass shower - partition with shutter, Towel rail, Toilet paper holder, soap dish, Robe hooks.
e	Sanitary ware/ CP fittings	Jacuzzi in Master bath, CP fittings Faucet, Wash Basin & Wall-Hung WC, Health Faucet.
f	Doors	Solid wood door frames. Panelled shutters made of solid core, teak veneered with PU coating.

### FIRE FIGHTING SYSTEM

Sprinkler, smoke detector and alarm system provided as per NBC norms.

*Disclaimer: Marble / Granite being natural material have inherent characteristics of color and grain variations. Utility/ Servant's room shall not be provided with air conditioning and double glass glazing for window. Specifications are indicative and are subject to change as decided by the Company or Competent Authority. Marginal variations may be necessary during construction. The brands of the equipments / appliances are tentative and liable to change at sole discretion of the Company. Applicant / Allottee shall not have any right to raise objection in this regard.*

### SERVANT'S ROOM

a	Floor	Anti-skid ceramic/vitrified tiles.
b	Walls	Acrylic emulsion paint on walls.
c	Toilets	Combination of ceramic tiles, acrylic emulsion and mirror in walls; Anti-skid ceramic tiles in flooring; Towel rail, Toilet paper holder, soap dish, Robe hooks; Conventional CP fittings, Wash Basin & WC.
d	Doors	Solid wood door frames. Panelled shutters made of solid core.

### EXTERNAL GLAZINGS

a	Windows / External glazings	Energy Efficient, Sound insulated Double glass units with - tinted /clear glass with Aluminum/UPVC frames in habitable rooms and aluminum/UPVC glazing with Single Pinhead/Tinted /Clear glass in all toilets.
---	-----------------------------	--

### ELECTRICAL

a	Fixtures/ Fittings	Modular switches and copper wiring, ceiling fans in all Rooms . light fittings in Toilet, Kitchen, Corridor and Passages.
b	Power Back-up	100 % DG Power back-up for all the Apartments and Common areas. Not exceeding 25 KVA per Apartment. Not exceeding 35 KVA per Penthouse.

### SECURITY SYSTEM

Secured Gated Community with access Control at Entrances and CCTV for Parking Area and Entrance Lobby at Ground Floor.

### LIFT LOBBY

a	Floor	Imported marble.
b	Walls	Suitable combination of Marble/wall paper and Acrylic Emulsion textured paint, embellished with mirror.

### STAIRCASES

a	Floor	Kota stone/ Similar stone/ Terrazo.
b	Wall	Flat oil paint.

### EXTERIOR FINISHES

Combination of plaster, paint and stone.

### COMMON RECREATIONAL FACILITIES

Gym.  
Multi purpose hall.  
Reading lounge/library.