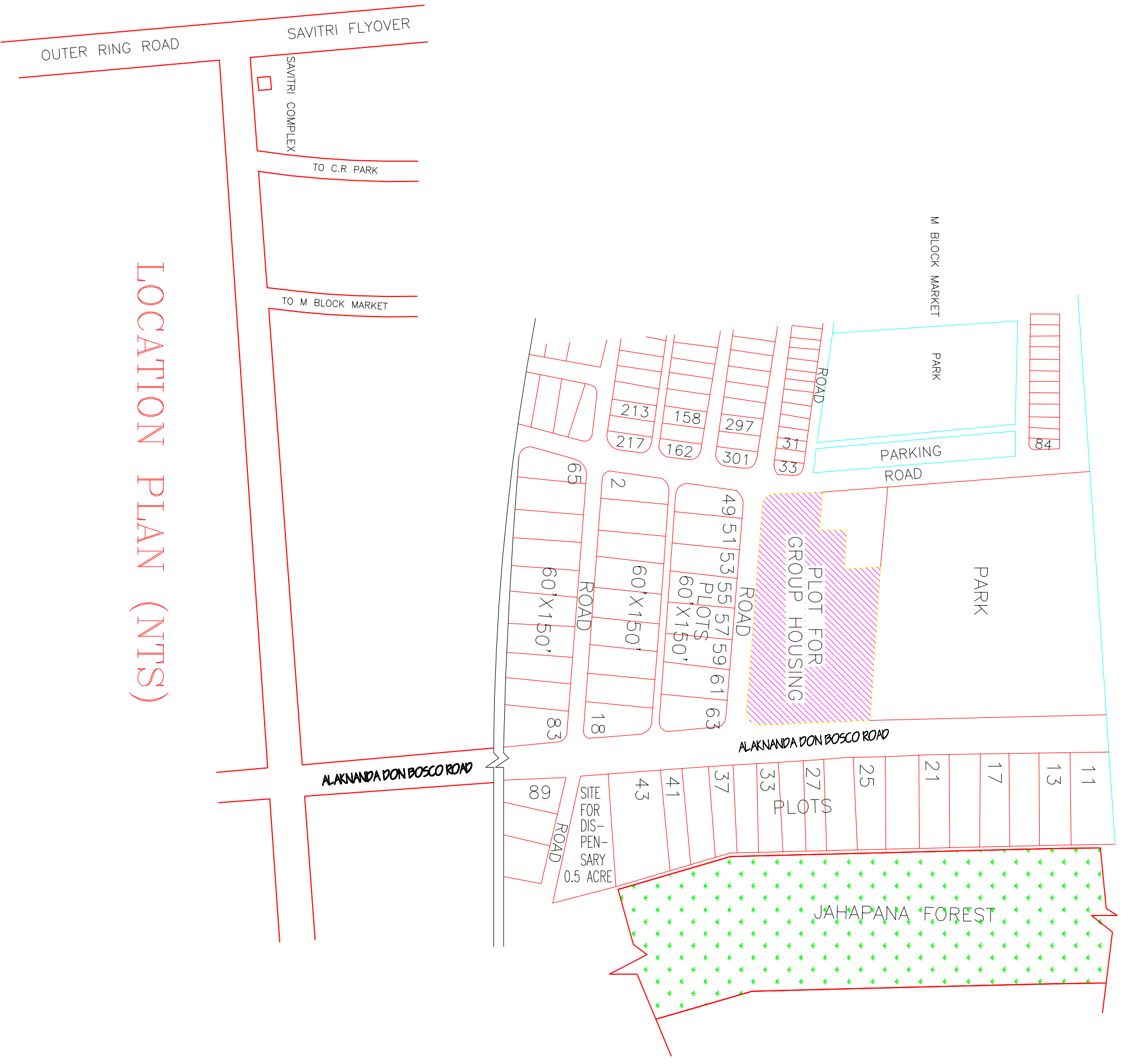
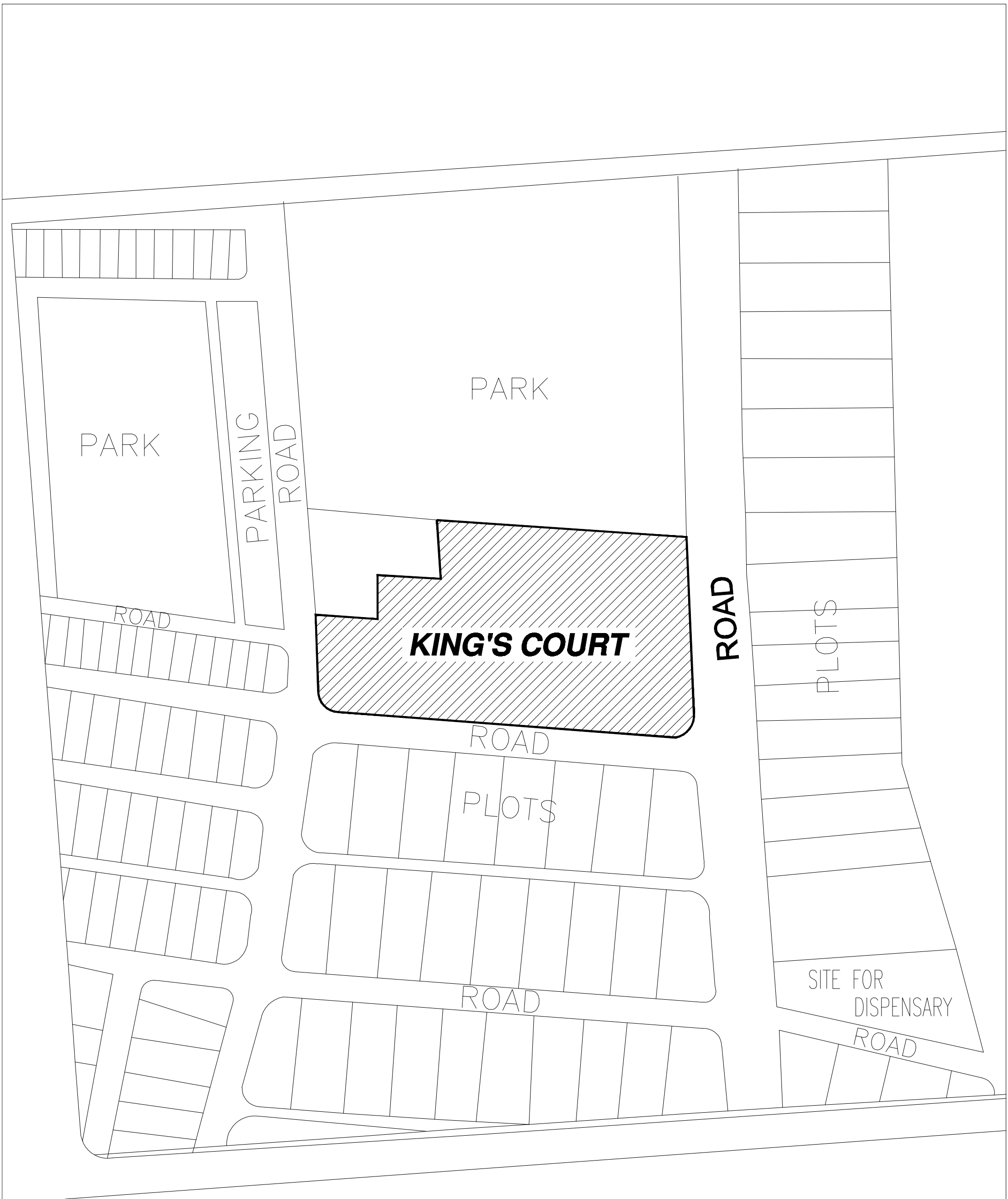


LOCATION PLAN (NT'S)





Project

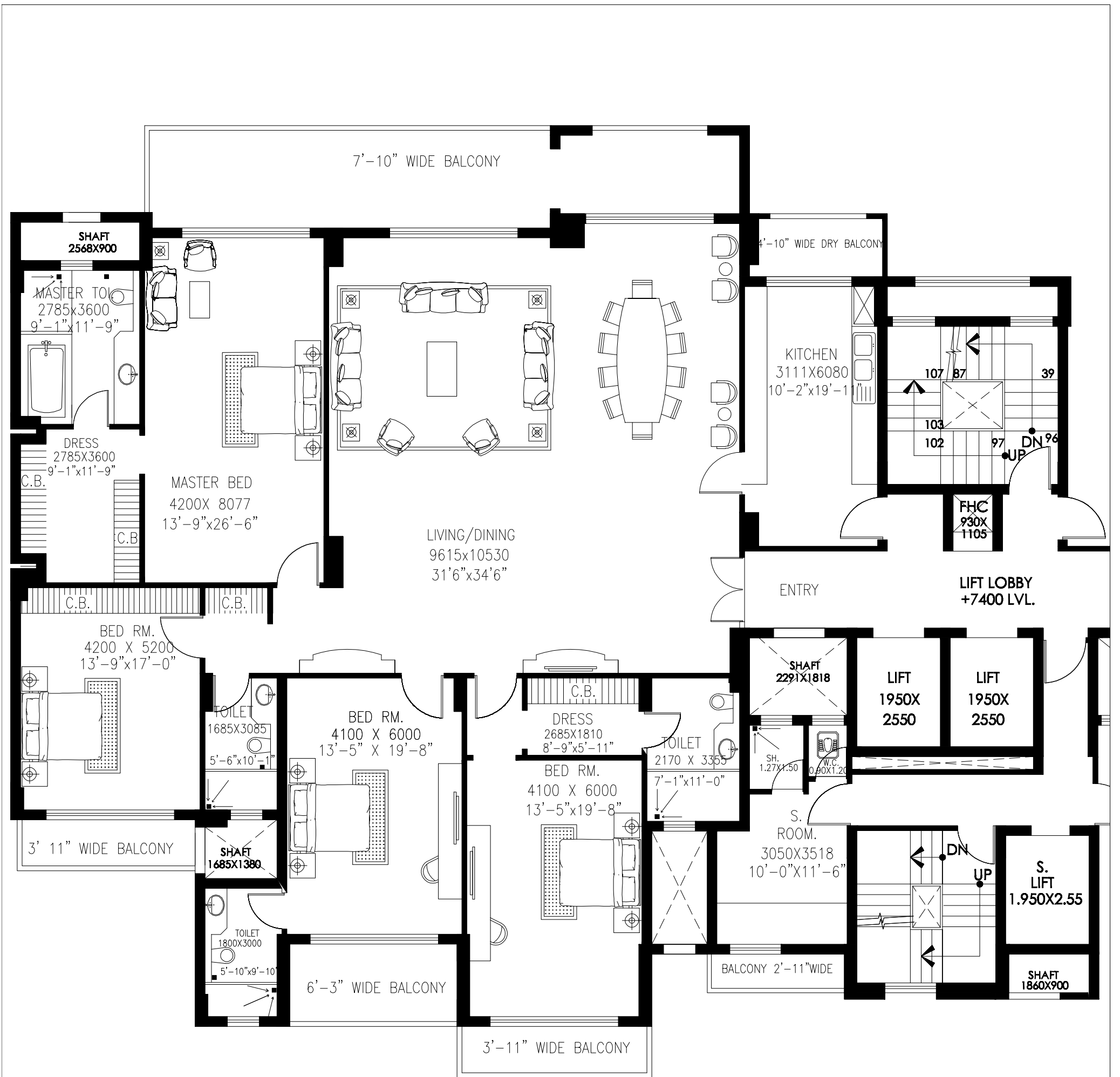
**KING'S COURT, W- Block
Greater Kailash II**

Title

TENTATIVE LOCATION PLAN

NORTH





TENTATIVE APARTMENT PLAN

TENTATIVE APARTMENT PLAN
 APARTMENT TYPE A01
 (SECOND TO 8TH FLOOR)



DLF LIMITED

Project

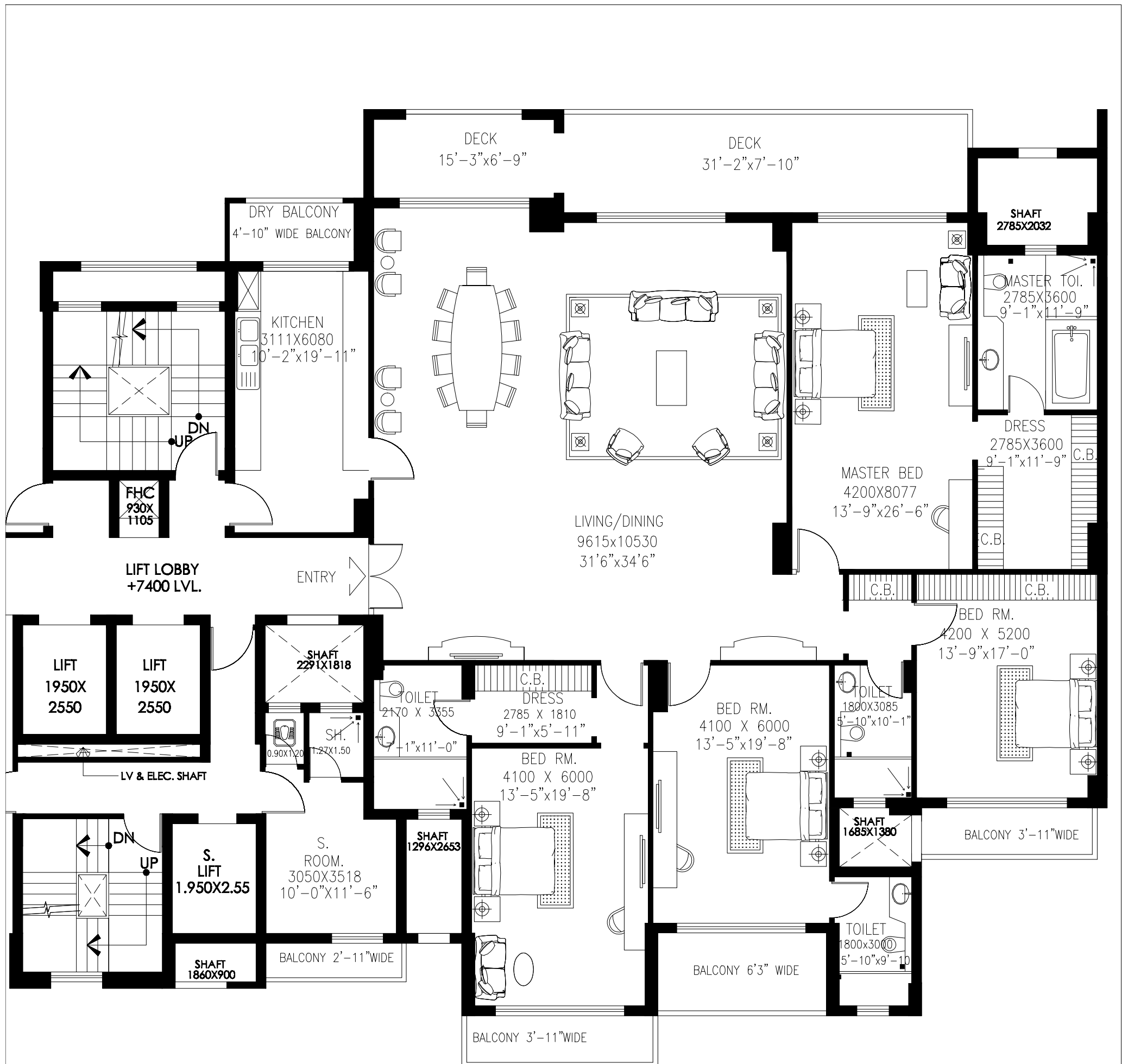
**KING'S COURT, W-Block
 Greater Kailash II**

Saleable Area

5442 SFT

North





TENTATIVE APARTMENT PLAN

TENTATIVE APARTMENT PLAN
 APARTMENT TYPE A02
 (SECOND TO 8TH FLOOR)



DLF LIMITED

Project

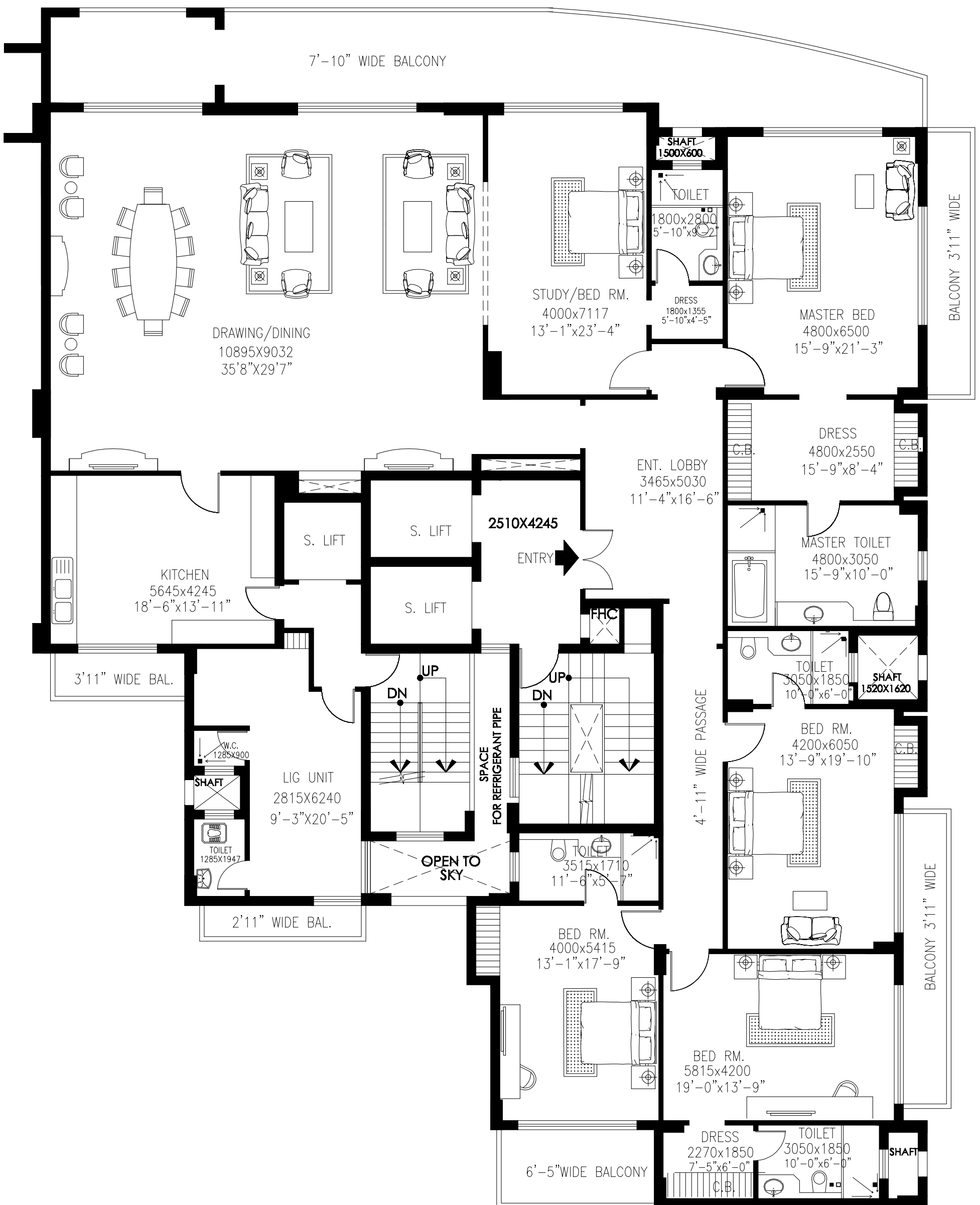
**KING'S COURT, W-Block
 Greater Kailash II**

Saleable Area

5422 SFT

North





TENTATIVE TYPICAL APARTMENT PLAN
(SECOND TO 8TH FLOOR)
APARTMENT TYPE B & LIG UNIT

TENTATIVE APARTMENT PLAN



DLF LIMITED

Project

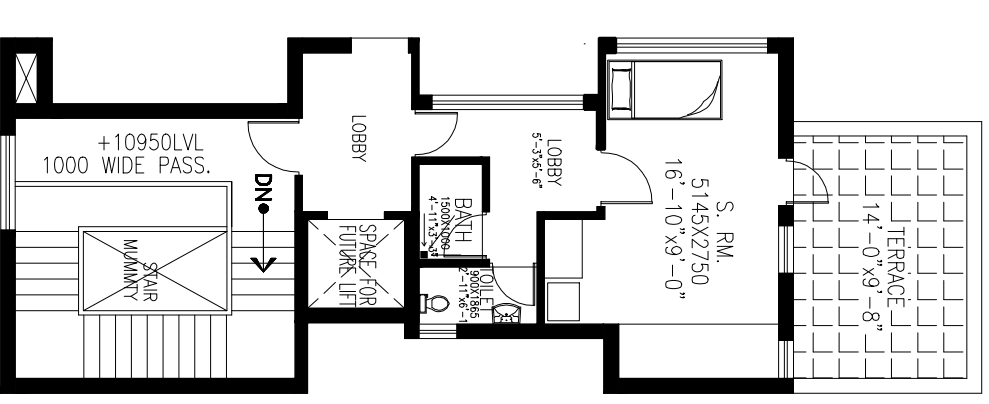
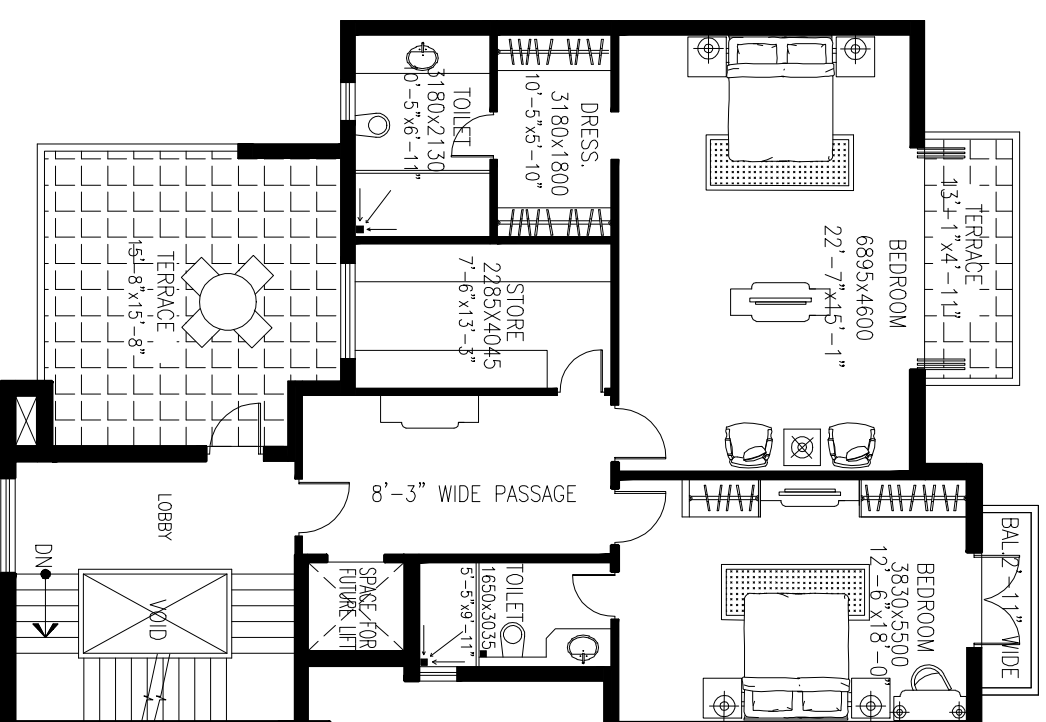
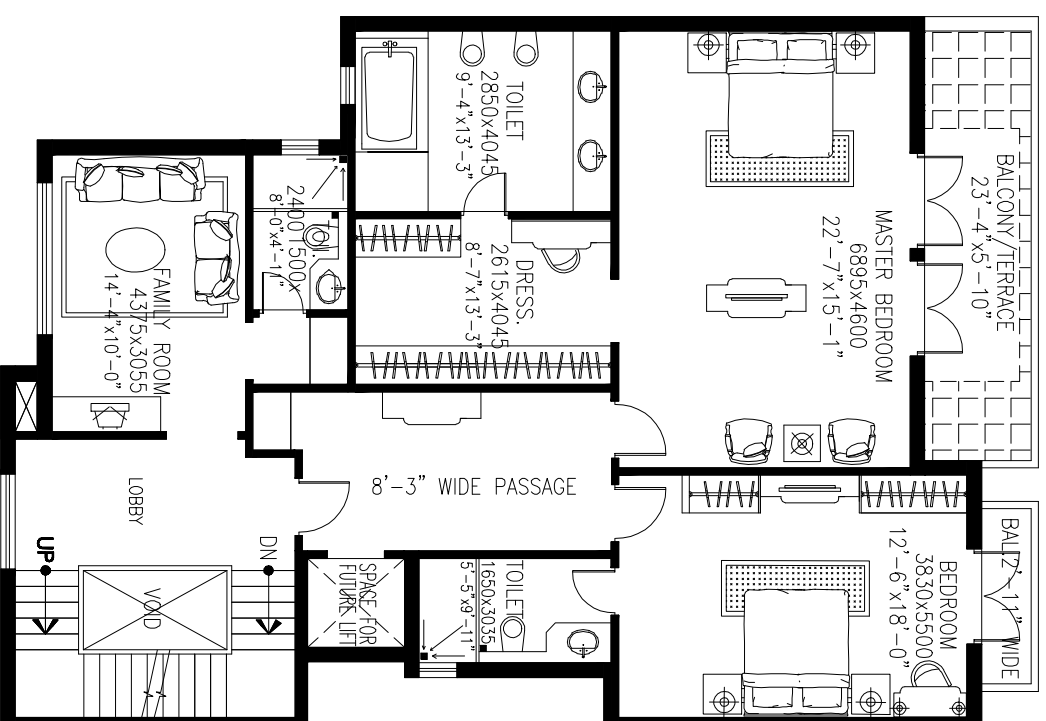
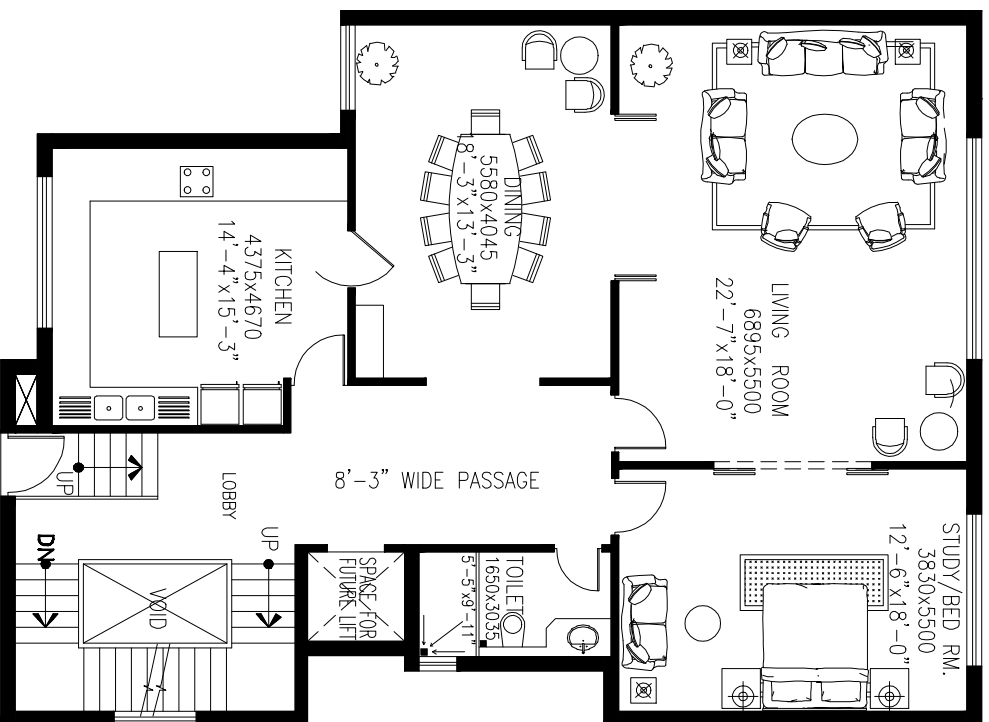
**KING'S COURT, W-Block
Greater Kailash II**

Saleable Area

APARTMENT = 6720 SFT
LIG UNIT = 531 SFT
TOTAL = 7251 SFT

North





TENTATIVE PLAN OF TOWN-HOUSE NO 3, 7 & 9
 TENTATIVE PLAN OF TOWN-HOUSE NO 2, 4 & 8 IS MIRROR IMAGE OF THIS PLAN



PROJECT
KING'S COURT, W-Block
Greater Kailash II

TENTATIVE SALEABLE AREA
6976 SFT.